

CERTIFIED LAND CORNER RECORDATION

DESCRIPTION OF CORNER EVIDENCE FOUND, AND ORIGINAL RECORD (If known)

LOCATION Found 4" x 9" x 11" portion of sandstone with grooves lying on ground near fence corner. Found lower portion of same stone, in place, in center of road.
 S.35 S.36
 S. 2 S. 1
 T.14N., R.64W G.L.O. record - Set Limestone 18 x 12 x 4 for corner to Sec. 35, T.13N. 36, 1 & 2.
 6th P.M.

DESCRIPTION OF MONUMENT AND ACCESSORIES ESTABLISHED TO PERPETUATE THE ORIGINAL LOCATION OF THIS CORNER:

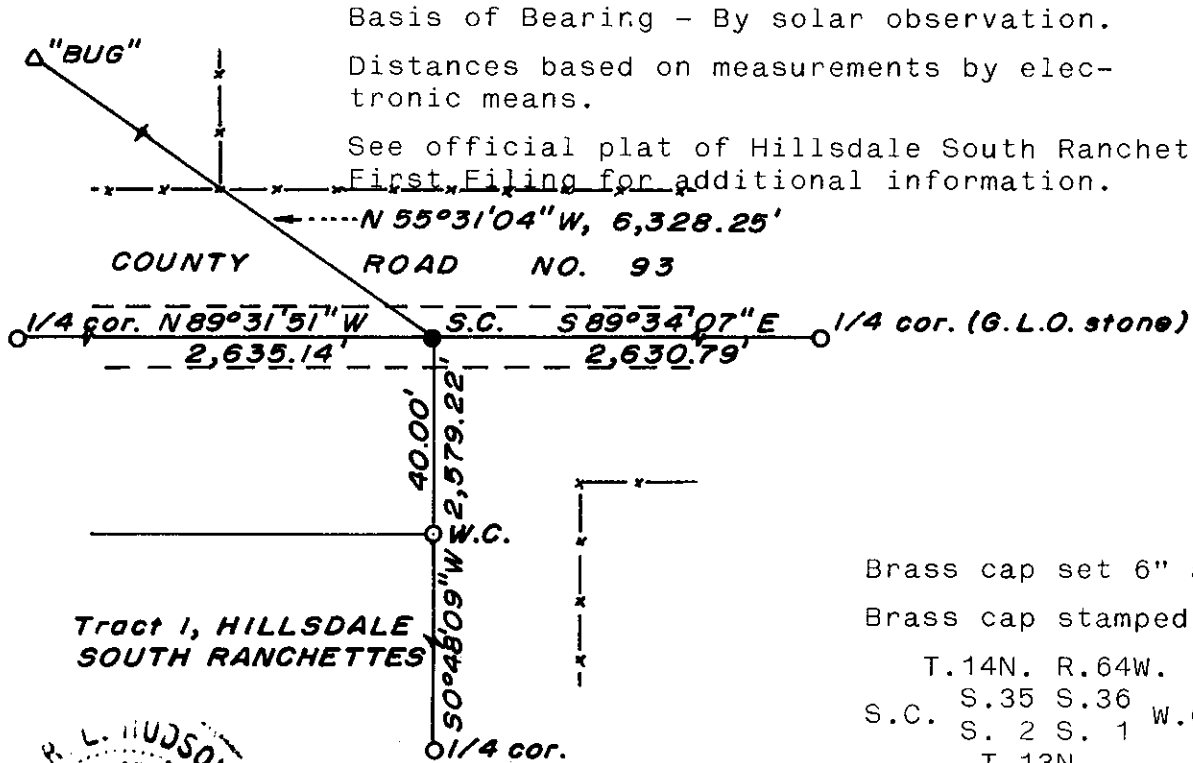
At the corner: Chiseled "X" on top of portion of stone still in place.

Accessories: A 1½" dia. x 30" long (concrete-filled) iron pipe with brass cap bears S 0°48'09" W, 40.00 feet distant (Set as Witness Corner)

Left upper portion of stone as memorial at Witness Corner.

SKETCH, WITH COURSE AND DISTANCE TO ADJACENT CORNER IF DETERMINED IN THIS SURVEY.

(May Sketch or Paste Reproduction on Reverse Side.)



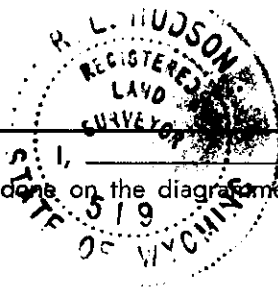
Tract 1, HILLSDALE SOUTH RANCHETTES

1" = 40'

Brass cap set 6" above surface.

Brass cap stamped:

T.14N. R.64W.
 S.35 S.36
 S.C. S. 2 S. 1 W.C.
 T.13N.
 LS 519 1977



I, R. L. Hudson certify that I have carefully performed or reviewed the work done on the diagrammed corner as reported on this recordation form and approve the same.

R. L. Hudson Wyoming L.S. No. 519
 Signature of Surveyor Registration No.

STATE OF WYOMING,
 Office of Clerk and Recorder,
 County of Sarasota

This "corner record" was filed for record on the 18 day of July, 1977, was noted on the cross-index plat and is assigned page No. _____, in book No. _____

Janet C Whitehead
 County Official

Cross Index No.	T. _____	R. _____	Mer. _____
	<u>2 21</u>	<u>14</u>	<u>64</u> Mer.
	<u>A 21</u>	<u>13</u>	<u>64</u> Mer.
	_____	_____	_____ Mer.
	_____	_____	_____ Mer.
	_____	_____	_____ Mer.
	_____	_____	_____ Mer.

446776

Photographed.....
Indexed.....
Posted.....
Assessor.....